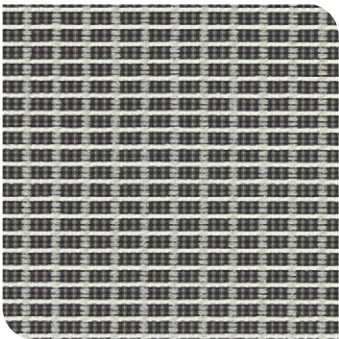
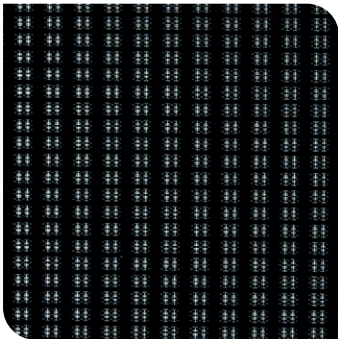


FINISH LIBRARY

TEXTILES



Grey Mesh



Black Mesh

**MESH TEXTILES**

**Abrasion Resistance**  
Martindale 100,000 cycles\*  
\*Abrasion test results exceeding ACT Performance Guidelines are not an indicator of product lifespan. Multiple factors affect fabric durability and appearance retention.

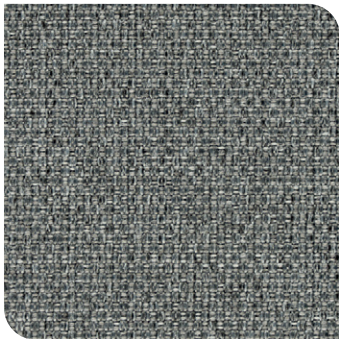
**Flammability**  
Cal TB 117-2013  
NFPA 260 Class 1

    \*

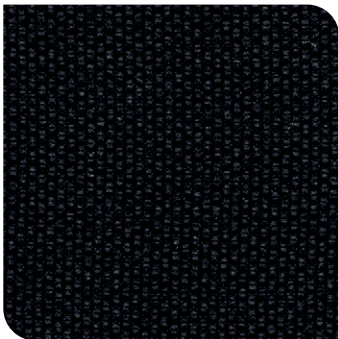
\*ACT® Registered Certification Marks



Graphite Micro-Leather



Grey Woven







Black Woven

**WOVEN TEXTILES**

**Abrasion Resistance**  
Martindale 90,000 cycles\*  
\*Abrasion test results exceeding ACT Performance Guidelines are not an indicator of product lifespan. Multiple factors affect fabric durability and appearance retention.

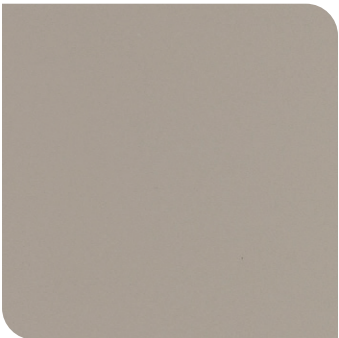
**Flammability**  
Cal TB 117-2013  
NFPA 260 Class 1

    \*

\*ACT® Registered Certification Marks



Black Micro-Leather



Grey-Beige Micro-Leather



Brown Micro-Leather



Grey-Brown Micro-Leather

**MICRO-LEATHER TEXTILES**

**Abrasion Resistance**  
Martindale 100,000 cycles\*  
\*Abrasion test results exceeding ACT Performance Guidelines are not an indicator of product lifespan. Multiple factors affect fabric durability and appearance retention.

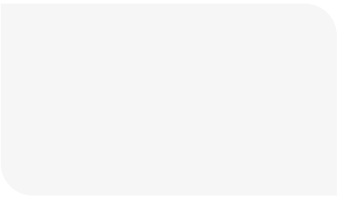
**Flammability**  
Cal TB 117-2013  
NFPA 260 Class 1

    \*

\*ACT® Registered Certification Marks

# FINISH LIBRARY

## POWDER COATS



Classic White



Perfect White



Classic Silver



Grey Silver



Warm Silver



Grey-Beige



Grey-Green



Red-Brown



Graphite



Classic Black

## LAMINATES



Grey Elm



Walnut



Graphite Ash