

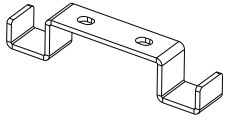
Clean Slate Cable Caddy

Assembly Instructions

form

FURNITURE MADE SIMPLE®

Components



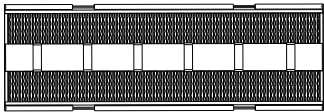
A / 2 pcs



B / 4 pcs (M5x12mm)



C / Template

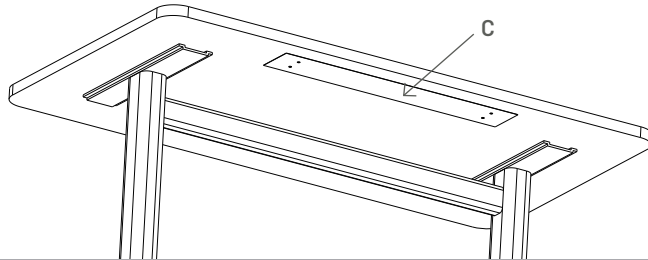


D / 1 pc

Assembly

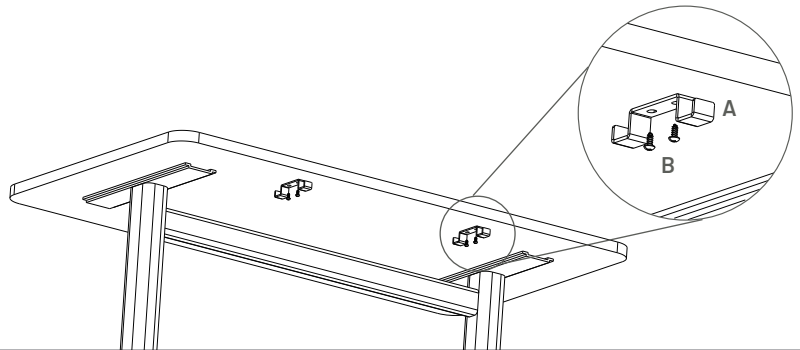
1

Stick the template on the underside of worktop and mark the hole positions.



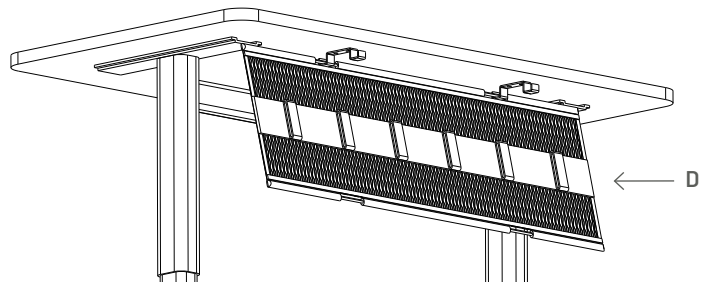
2 (2x)

Install the hanging brackets with the hook sides facing inward using the screws in the hole positions marked in step 1.



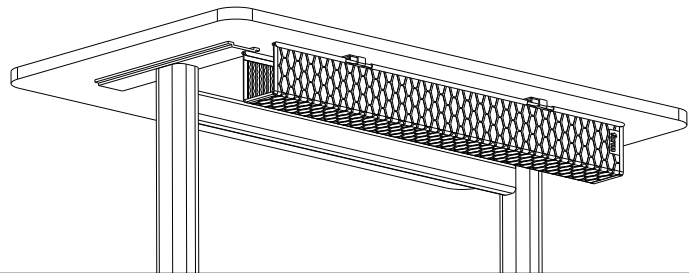
3

Hang one side of the Clean Slate Cable Caddy into the brackets. Secure your power strip and cables using the velcro strips.



4

Hang the other side of the Clean Slate Cable Caddy into the other set of brackets.



formfurniture

www.form-furniture.com

Form Furniture ©2023 All Rights Reserved.

